



ART AND UTILITY

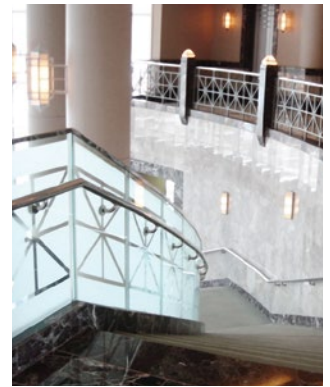
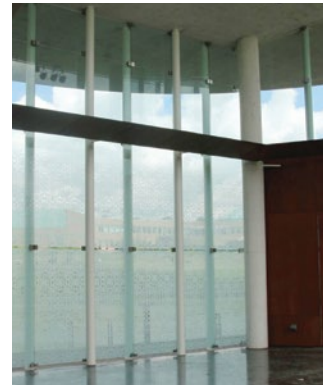
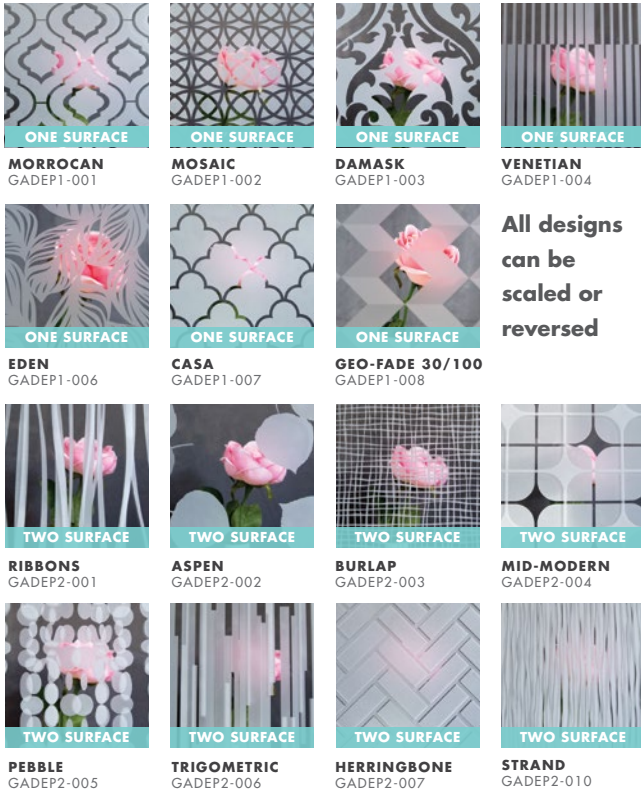
Etched glass applies a light, frosted texture to glass through sandblasting either by hand or machine. Etching can be done evenly over an entire piece, or areas of the glass may be masked prior to sandblasting to create patterns, depth, and texture. Other applications include:

- kitchen backsplash
- vanity tops
- sinks
- tabletops
- cabinet door inserts
- window overlays
- bowls
- shower enclosures
- water features
- shelving
- stair railing
- doors
- partitions

GlassArt Design creates and installs custom glass products for residential and commercial glass applications and has the largest selection of custom glass products in Minnesota. Call or come visit us today.

**THE POSSIBILITIES OF GLASS ARE LIMITED ONLY BY THE IMAGINATION.
EXPLORE THE POTENTIAL AT GLASSARTDESIGN.COM**





All designs can be scaled or reversed

ETCHED GLASS HAS ENDLESS POSSIBILITIES - WE CAN CREATE ANY PATTERN OR DESIGN

SPECIFICATIONS

Etched glass can be:

- tempered
- laminated
- custom stained
- back painted
- cut to size (2 sq. ft. minimum)

Glass finish:

- clear
- low iron
- grey
- bronze

Standard thickness:

- 1/8" thick up to 3/4" thick

Custom thickness available:

- 1" and thicker

Custom options available:

- notches
- shapes
- patterns
- laminating
- holes
- custom designs
- outlets
- stained custom color
- ColorCoat custom color

Edgework options available:

- flat polish
- flat ground
- plateau edge
- nibbled edge
- broken edge
- pencil edge

Max sheet size:

- 69" x 100"



Visit us in person at our showroom in the North Loop in downtown Minneapolis or contact one of our glass experts to discuss your next project.

Please visit GlassArtDesign.com for a current listing of all products and services available, and additional photos.



DESIGN | FABRICATION | INNOVATION

427 North 10th AVENUE • MPLS, MN 55401
 (612) 870 0247 main • (612) 870 0186 fax
 e-mail: sales@glassartdesign.com

